

Clay

More than a table, a sculpture, a perfect union of beauty and harmonious proportions. Presented at the 2015 Milan Furniture Fair and winner of different awards: Iconic Design Award 2015, Good Design Award 2016, Red Dot Award for the 2016 Product Design category. The meeting of two volumes achieves a perfect balance of one over the other.



Clay

Table with base in rigid polyurethane available in lacquered finishing or covered with hand-spread materic finishes, as per price-list. Round or elliptical bases and tops. Tops of glass, ceramic, covered MDF or marble. Available in indoor and outdoor versions. "Lazy Susan" revolving tray centerpiece, upon request or integrated flush with the top.



Clay

height
ceramic top 73,5 cm
glass top 73,5 cm
MDF top 75,5 cm
marble top 74,5

measures
Ø 120 cm
Ø 140 cm
Ø 160 cm
Ø 180 cm
Ø 200 cm



Clay + Lazy Susan

height 75,5 cm

measures
Ø 160 cm + Lazy Susan Ø 70
Ø 180 cm + Lazy Susan Ø 80
Ø 200 cm + Lazy Susan Ø 100



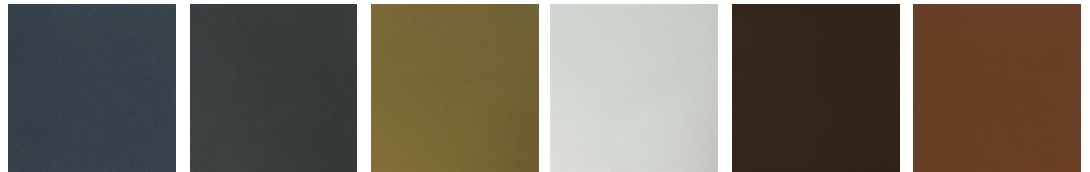
Clay Oval

height
ceramic top 73,5 cm
glass top 73,5 cm
MDF top 75,5 cm
marble top 74,5

measures
160 x 110 cm
180 x 120 cm
200 x 120 cm
218 x 120 cm

Base

Handcraft finishes



D55 REALE BLUE CONCRETE

D56 ARDESIA CONCRETE

D57 OCRA CONCRETE

D58 GHIACCIO CONCRETE

D59 CACAO CONCRETE

D60 MATTONE RED CONCRETE



D61 WHITE CONCRETE

D65 LUNA GREY CONCRETE

D66 BLACK CONCRETE

D62 COURT GREY

D64 TUFO STONE

D67 LAVA STONE

Lacquers



B13 MATT SABBIA

B22 BUNGEE BUNGEE BROWN

B34 LIGHT GREY

B42 GRAFITE

B62 MATT WHITE

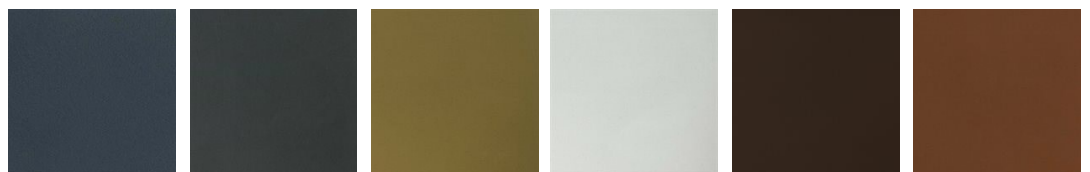
F50 GLOSSY WHITE



B82 GREY

Top

Handcraft finishes



D55 REALE BLUE CONCRETE

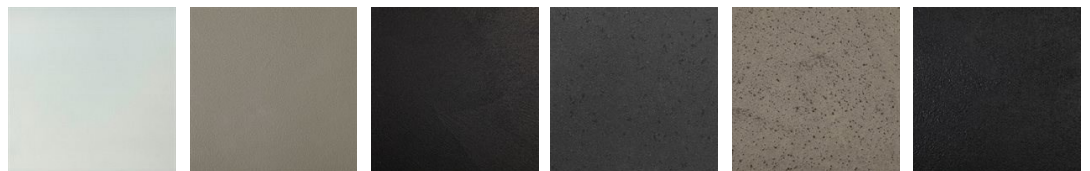
D56 ARDESIA CONCRETE

D57 OCRA CONCRETE

D58 GHIACCIO CONCRETE

D59 CACAO CONCRETE

D60 MATTONE RED CONCRETE



D61 WHITE CONCRETE

D65 LUNA GREY CONCRETE

D66 BLACK CONCRETE

D62 COURT GREY

D64 TUFO STONE

D67 LAVA STONE

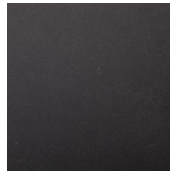
Ceramics



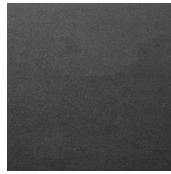
D84 BIANCO CALCE



D85 CEMENTO



D86 ASFALTO



D87 LAVA



D90 BIANCO STATUARIO



D92 GLOSSY
MARQUINA BLACK



D93 SAHARA

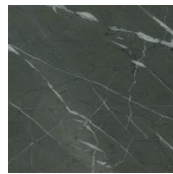


D94 INDUSTRIAL
WHITE

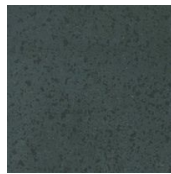


D95 INDUSTRIAL GREY

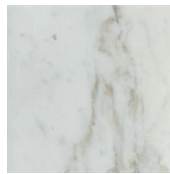
Marble



N05 GRAFITE GREY



N04 ETNA NATURAL
ROCK



N03 CALACATTA ORO



N02 CARRARA

Wood



C01 NATURAL ASH



C02 MORO ASH



C03 GRAFITE ASH

Glass



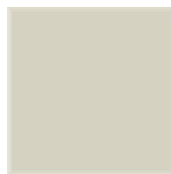
E18 BIANCO OPACO



E40 GRAFITE OPACO



E97 BIANCO LUCIDO



E25 SABBIA OPACO